

Datalogic® SDK Read Me First

Document: Read Me First **Distribution Date:** May 23, 2018

Product Involved: Skorpion X4, Joya™ Touch, Falcon X3+, Falcon X3, Elf, Skorpion X3, Lynx, and DH60 devices

Description: SDK Read Me First

Business Unit: Mobile

Distribution Scope: ☐ Internal ☒ External – specify: Public

1. Supported Devices

- Skorpion X4, Joya™ Touch, Falcon X3+, Falcon X3, Elf, Skorpion X3, Lynx, and DH60 devices

2. Supported Operating Systems

- Windows 7 Professional, Ultimate, Enterprise, Ultimate, SP1, 32-bit and 64-bit are tested.
- Windows 8.1 Professional, 64-bit is tested.
- Windows 10 Professional, 64-bit is tested.
- Home editions of these operating systems are not supported.
- Windows 8 and later do not officially support Windows Mobile Device Center.

3. Supported Visual Studio editions

- Microsoft Visual Studio 2008 Professional or Visual Studio 2008 for Software Architects.

4. Prerequisites

- Required Microsoft Visual Studio 2008 Service Pack 1
(Installer) <https://www.microsoft.com/en-us/download/details.aspx?id=10986>
(ISO) <https://www.microsoft.com/en-us/download/details.aspx?id=13276>
- Required Microsoft WEC 7.0 ATL Update for VS2008 SP1
<https://www.microsoft.com/en-us/download/details.aspx?id=27729>
- Optional update to help VS2008 debugging. When debugging WEC 7.0 application using the VS2008 for Smart Devices debugger, a user might not be able to use the single step function. This update addresses this issue.
<https://www.microsoft.com/en-us/download/details.aspx?id=11935>
- Windows Mobile Device Center 6.1 or newer for Windows 7, 32-bit or 64-bit computers
32-bit: <https://www.microsoft.com/en-US/download/details.aspx?id=14>
64-bit: <http://www.microsoft.com/download/en/details.aspx?id=3182>

© 2017-2018 Datalogic S.p.A. and its Group companies. All rights reserved. Protected to the fullest extent under U.S. and international laws. Copying, or altering of this document is prohibited without express written consent from Datalogic, Inc. Product specifications are subject to change without notice. Datalogic Proprietary & Confidential Information.

The Bluetooth word mark and logos are owned by the Bluetooth SIG, Inc. and any use of such mark is under license.

Datalogic and the Datalogic logo are registered trademarks of Datalogic S.p.A. in many countries, including the U.S. and the E.U. and Datalogic and the Datalogic Automatic Data Capture logo are trademark of Datalogic S.p.A. The Joya logo is a registered trademark of Datalogic, S.r.l. in the U.S. and the E.U. Joya, Shopevolution and the Elf logo are registered trademarks of Datalogic S.r.l. in the E.U. Elf, Joya, Kyman, Kyman-Gun, Lynx, Memor, R-Series, Rhino, Skorpion, and Skorpion Gun 3GL, Datalogic Aladdin, Datalogic STAR, Datalogic STAR Cordless System and Touch are trademarks of Datalogic, S.r.l. Falcon, the Falcon logo, Magellan, PowerScan, and QuickScan are registered trademarks of Datalogic, Inc. in many countries, including the U.S. and the E.U. All-Weighs, First Strike, Gryphon, Heron, illumix, Pegaso, PreScan, PT-2000, Sextante GZPS, SurroundScan and Top Gun are registered trademarks of Datalogic, Inc. in the U.S. Cashier Training, Motionix, Produce Rail, ScaleSentry, SmartSentry, and Productivity Index Reporting are trademarks of Datalogic, Inc. All other brand and product names are trademarks of their respective owners.



- The additional Windows Mobile 6 Professional Development Kits Refresh is required for all Windows Mobile or Windows Embedded Handheld 6.5 devices using C, C++, C# or VB.NET languages.

Windows Mobile 6 Professional Development Kits Refresh is also required for Windows CE 6.0 devices using C, C++, C# or VB.NET languages when developing on a Windows 7 or later 64-bit computer.

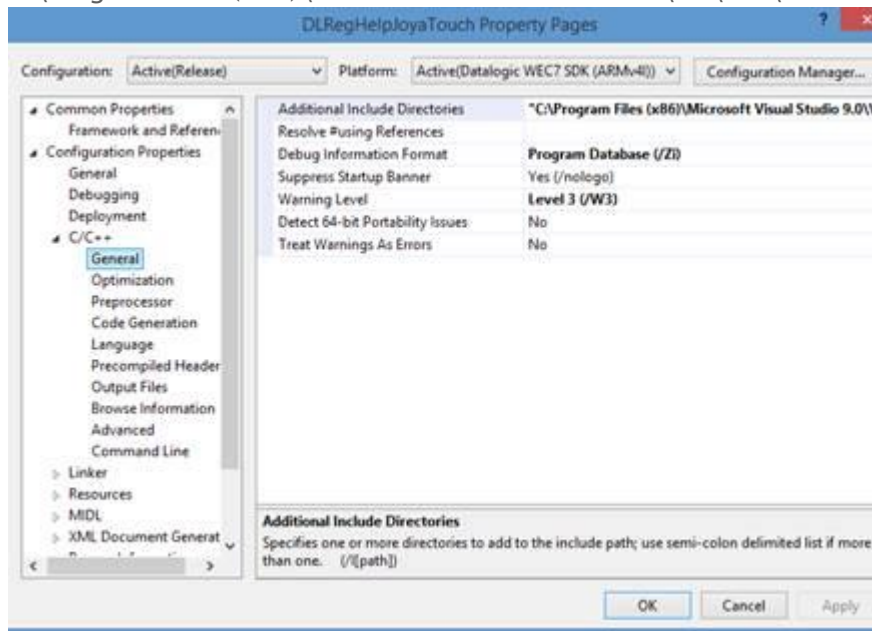
<http://www.microsoft.com/en-us/download/details.aspx?id=6135>

5. Help Files

- Help files are provided for the users without the need to install the SDK
- Double-click on the **SDK_NextGen_Products.chm** file to view the help information.
- After the SDK is installed, the Help information is available in the
Start menu > Datalogic > SDK > Help.

6. Important Note for C / C++ Applications

- When creating a C/C++ project for MFC or ATL Smart Devices with the VS2008 Smart Device wizard, you'll need to add these directories to your [project properties pages -> C/C++ -> General -> Additional Include Directories](#)
 - X:\Program Files (x86)\Microsoft Visual Studio 9.0\VC\ce7\atlmfc\include
 - X:\Program Files (x86)\Microsoft Visual Studio 9.0\VC\ce7\include



- When creating a C/C++ WEC7 ATL COM component with the VS2008 Smart Device wizard, you'll need to comment out instances of the #ifndef around the DECLARE_REGISTRY_RESOURCEID() call. This avoids compiler errors.

```
//#ifndef _CE_DCOM
DECLARE_REGISTRY_RESOURCEID(IDR_DLREGHELPTL)
//#endif
```

© 2017-2018 Datalogic S.p.A. and its Group companies. All rights reserved. Protected to the fullest extent under U.S. and international laws. Copying, or altering of this document is prohibited without express written consent from Datalogic, Inc. Product specifications are subject to change without notice. Datalogic Proprietary & Confidential Information.

The Bluetooth word mark and logos are owned by the Bluetooth SIG, Inc. and any use of such mark is under license.

Datalogic and the Datalogic logo are registered trademarks of Datalogic S.p.A. in many countries, including the U.S. and the E.U. and Datalogic and the Datalogic Automatic Data Capture logo are trademark of Datalogic S.p.A. The Joya logo is a registered trademark of Datalogic, S.r.l. in the U.S. and the E.U. Joya, Shopevolution and the Elf logo are registered trademarks of Datalogic S.r.l. in the E.U. Elf, Joya, Kyman, Kyman-Gun, Lynx, Memor, R-Series, Rhino, Skopio, and Skopio Gun 3GL, Datalogic Aladdin, Datalogic STAR, Datalogic STAR Cordless System and Touch are trademarks of Datalogic, S.r.l. Falcon, the Falcon logo, Magellan, PowerScan, and QuickScan are registered trademarks of Datalogic, Inc. in many countries, including the U.S. and the E.U. All-Weights, First Strike, Gryphon, Heron, illumix, Pegaso, PreScan, PT-2000, Sextante GZPS, SurroundScan and Top Gun are registered trademarks of Datalogic, Inc. in the U.S. Cashier Training, Motionix, Produce Rail, ScaleSentry, SmartSentry, and Productivity Index Reporting are trademarks of Datalogic, Inc. All other brand and product names are trademarks of their respective owners.



7. Important Note for C# and VB.Net Applications

- When using C# applications using the Datalogic SDK, the user must also copy the Datalogic.API.DLL to the portable device in the same directory as your application. This is a standard method used with most .NET applications.
 - The Datalogic.API.DLL file can be found at this location:
X:\Program Files (x86)\Datalogic\WEC7_SDK\DotNet\Datalogic.API.dll

8. Important Note for Later Versions of Microsoft Visual Studio

- WEC7 Smart Device applications cannot be built with Visual Studio 2010 or later.
- For computers that have Microsoft Visual Studio 2010 or newer version installed, the user must be careful which IDE will be launched when selecting solution file for sample application or other Datalogic device applications.
- If VS2010 or newer is installed, do not use the Start menu > Datalogic > SDK to start any of the sample applications. It will launch the newest version of Visual Studio instead of VS2008. It is best to first launch VS2008 and then open the sample application solution.

9. Important Note for Windows 10 Users

- Windows Mobile Device Center (WMDC) 6.1 may experience difficulty running on PCs using Windows 10. Connecting the Datalogic device may not cause WMDC to start and ActiveSync communications will not work. The following troubleshooting steps can be used to get WMDC working correctly.
- First, try un-installing and re-installing WMDC 6.1. In some cases, this is enough to allow WMDC to operate correctly. See links earlier in the Prerequisites section of this document.
- WMDC uses two system services, **Rapimgr** and **Wcescomm**. Rapimgr's service name is *Windows Mobile-based device connectivity* and Wcescomm's service name is *Windows Mobile-2003-based device connectivity*.
- These two must share a kernel semaphore and be started in the same shared svchost.exe. However, by default, in the Windows 10 Creators Update, svchost.exe will not allow this. The fix is to add the *SvcHostSplitDisable* flag to the registry for both services. You can achieve this by doing the following:
 - Start > type Cmd.
 - Right-click on the **Command Prompt** result and click **Run as administrator**.
 - At the *Do you want to allow this app to make changes to your device?* Prompt click 'Yes'.
 - Enter the following 2 lines at the Command Prompt window:

© 2017-2018 Datalogic S.p.A. and its Group companies. All rights reserved. Protected to the fullest extent under U.S. and international laws. Copying, or altering of this document is prohibited without express written consent from Datalogic, Inc. Product specifications are subject to change without notice. Datalogic Proprietary & Confidential Information.

The Bluetooth word mark and logos are owned by the Bluetooth SIG, Inc. and any use of such mark is under license.

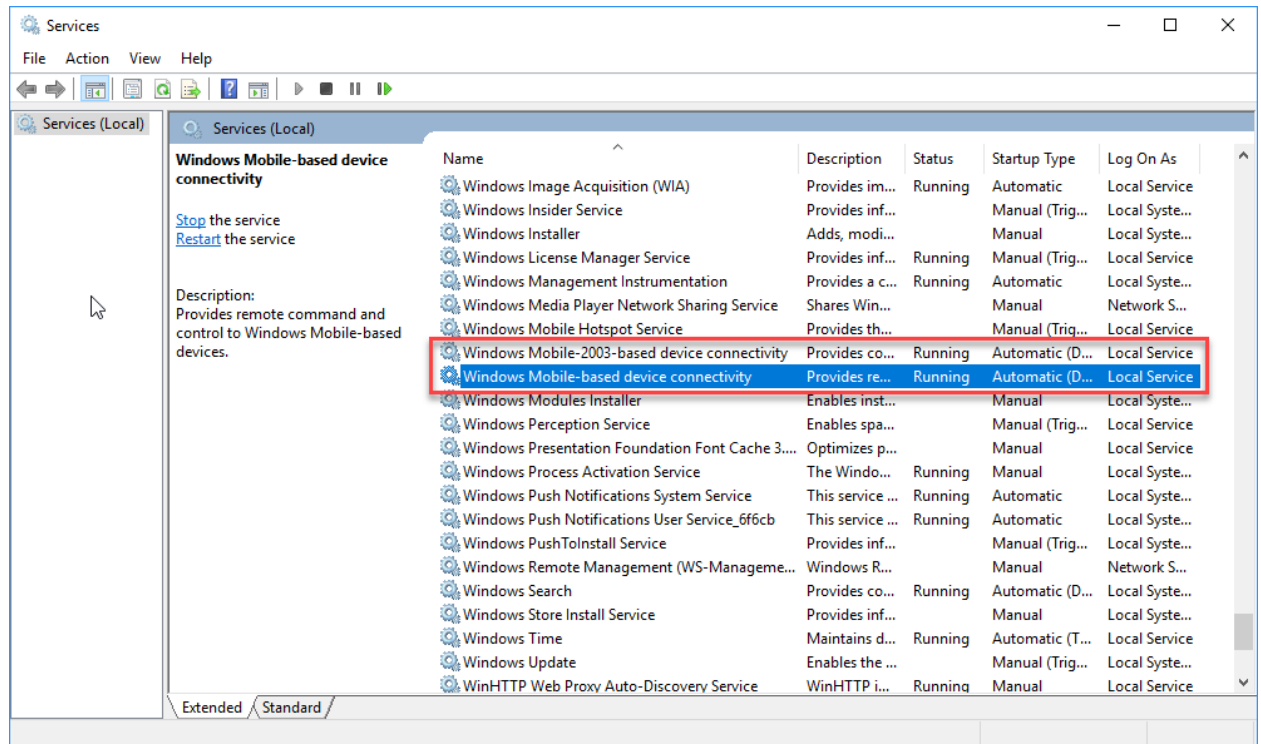
Datalogic and the Datalogic logo are registered trademarks of Datalogic S.p.A. in many countries, including the U.S. and the E.U. and Datalogic and the Datalogic Automatic Data Capture logo are trademark of Datalogic S.p.A. The Joya logo is a registered trademark of Datalogic, S.r.l. in the U.S. and the E.U. Joya, Shopevolution and the Elf logo are registered trademarks of Datalogic S.r.l. in the E.U. Elf, Joya, Kyman, Kyman-Gun, Lynx, Memor, R-Series, Rhino, Skorpion, and Skorpion Gun 3GL, Datalogic Aladdin, Datalogic STAR, Datalogic STAR Cordless System and Touch are trademarks of Datalogic, S.r.l. Falcon, the Falcon logo, Magellan, PowerScan, and QuickScan are registered trademarks of Datalogic, Inc. in many countries, including the U.S. and the E.U. All-Weights, First Strike, Gryphon, Heron, illumix, Pegaso, PreScan, PT-2000, Sextante GZPS, SurroundScan and Top Gun are registered trademarks of Datalogic, Inc. in the U.S. Cashier Training, Motionix, Produce Rail, ScaleSentry, SmartSentry, and Productivity Index Reporting are trademarks of Datalogic, Inc. All other brand and product names are trademarks of their respective owners.



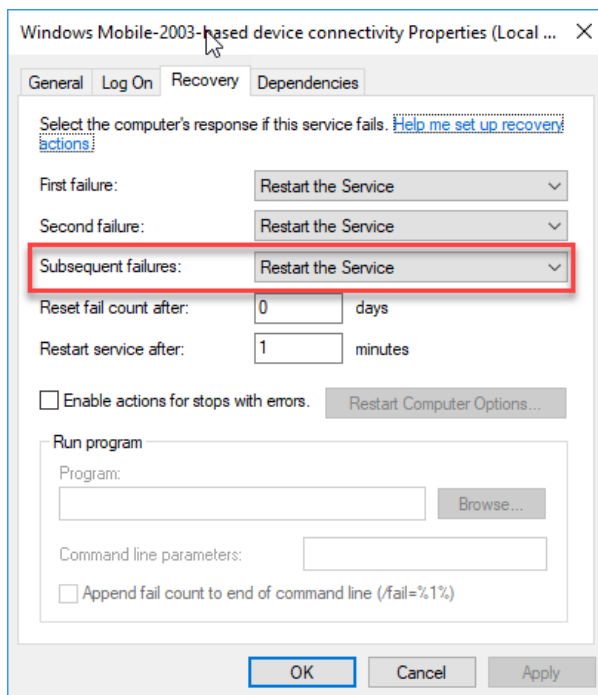
```
REG ADD HKLM\SYSTEM\CurrentControlSet\Services\RapiMgr /v SvcHostSplitDisable /t  
REG_DWORD /d 1 /f
```

```
REG ADD HKLM\SYSTEM\CurrentControlSet\Services\WcesComm /v SvcHostSplitDisable /t  
REG_DWORD /d 1 /f
```

- The RapiMgr service can occasionally crash when the device disconnects from the system. To allow Windows to always restart the service anyways, do the following:
 - Start > type Services.
 - Click on the **Services** result.
 - Scroll down and locate **Windows Mobile-based device connectivity**, and then double click on it.



- Click the **Recovery** tab.
- Set **Subsequent failures** to *Restart the Service*.



- Repeat the same steps for the **Windows Mobile 2003-based device connectivity** service.
- Restart your PC. Afterwards, WMDC should operate normally.
- More information can be found at the following link:

<https://social.technet.microsoft.com/Forums/windows/en-US/9cab3e8e-6cc4-48e4-8ed9-d595bc83f04b/windows-mobile-device-centre?forum=win10itproapps>

10. Installation Instructions

- (1) Launch the DatalogicSDK.exe
- (2) Press the Next button
- (3) Review EULA
- (4) Press the "I agree to the Terms specified in the License Agreement" button.
- (5) Press the Next button
- (6) Review the path and if correct, press the Next button.
- (7) Keep all the selections checked.
- (8) Press the Next button
- (9) Press the finished button.

11. To Use the Sample Applications

- (1) Start menu -> Datalogic -> SDK -> C C++ Samples -> DeviceApiTest
- (2) Make sure the Target Device is set to Windows CE 6 Professional Device. This is the default.
- (3) Select Solution Configuration to Debug if not already selected.
- (4) Select Build -> Build Solution

© 2017-2018 Datalogic S.p.A. and its Group companies. All rights reserved. Protected to the fullest extent under U.S. and international laws. Copying, or altering of this document is prohibited without express written consent from Datalogic, Inc. Product specifications are subject to change without notice. Datalogic Proprietary & Confidential Information.

The Bluetooth word mark and logos are owned by the Bluetooth SIG, Inc. and any use of such mark is under license.

Datalogic and the Datalogic logo are registered trademarks of Datalogic S.p.A. in many countries, including the U.S. and the E.U. and Datalogic and the Datalogic Automatic Data Capture logo are trademark of Datalogic S.p.A. The Joya logo is a registered trademark of Datalogic, S.r.l. in the U.S. and the E.U. Joya, Shopevolution and the Elf logo are registered trademarks of Datalogic S.r.l. in the E.U. Elf, Joya, Kyman, Kyman-Gun, Lynx, Memor, R-Series, Rhino, Skorpio, and Skorpio Gun 3GL, Datalogic Aladdin, Datalogic STAR, Datalogic STAR Cordless System and Touch are trademarks of Datalogic, S.r.l. Falcon, the Falcon logo, Magellan, PowerScan, and QuickScan are registered trademarks of Datalogic, Inc. in many countries, including the U.S. and the E.U. All-Weighs, First Strike, Gryphon, Heron, illumix, Pegaso, PreScan, PT-2000, Sextante GZPS, SurroundScan and Top Gun are registered trademarks of Datalogic, Inc. in the U.S. Cashier Training, Motionix, Produce Rail, ScaleSentry, SmartSentry, and Productivity Index Reporting are trademarks of Datalogic, Inc. All other brand and product names are trademarks of their respective owners.



- (5) Connect the Datalogic device to the PC using USB.
- (6) Select Debug menu -> Start Debug.

© 2017-2018 Datalogic S.p.A. and its Group companies. All rights reserved. Protected to the fullest extent under U.S. and international laws. Copying, or altering of this document is prohibited without express written consent from Datalogic, Inc. Product specifications are subject to change without notice. Datalogic Proprietary & Confidential Information.

The Bluetooth word mark and logos are owned by the Bluetooth SIG, Inc. and any use of such mark is under license.

Datalogic and the Datalogic logo are registered trademarks of Datalogic S.p.A. in many countries, including the U.S. and the E.U. and Datalogic and the Datalogic Automatic Data Capture logo are trademark of Datalogic S.p.A. The Joya logo is a registered trademark of Datalogic, S.r.l. in the U.S. and the E.U. Joya, Shopevolution and the Elf logo are registered trademarks of Datalogic S.r.l. in the E.U. Elf, Joya, Kyman, Kyman-Gun, Lynx, Memor, R-Series, Rhino, Skorpio, and Skorpio Gun 3GL, Datalogic Aladdin, Datalogic STAR, Datalogic STAR Cordless System and Touch are trademarks of Datalogic, S.r.l. Falcon, the Falcon logo, Magellan, PowerScan, and QuickScan are registered trademarks of Datalogic, Inc. in many countries, including the U.S. and the E.U. All-Weighs, First Strike, Gryphon, Heron, illumix, Pegaso, PreScan, PT-2000, Sextante GZPS, SurroundScan and Top Gun are registered trademarks of Datalogic, Inc. in the U.S. Cashier Training, Motionix, Produce Rail, ScaleSentry, SmartSentry, and Productivity Index Reporting are trademarks of Datalogic, Inc. All other brand and product names are trademarks of their respective owners.

